



THE BLOSSOMS

— DIDCOT —

croudacehomes

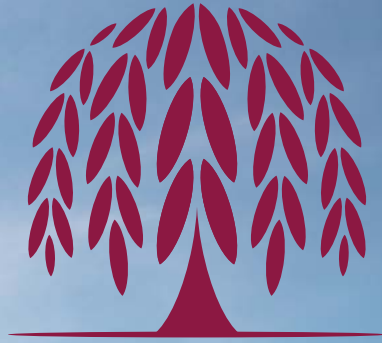


Customer Satisfaction 2025

5 STAR AWARD WINNING HOME BUILDER

Croudace Homes is delighted to have been awarded an HBF 5 Star Home Builder Customer Satisfaction Award for the thirteenth year running. More than 9 out of 10 of our customers would recommend our homes to their friends.





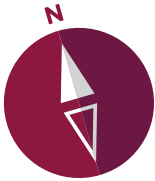
THE BLOSSOMS

A SUPERB DEVELOPMENT OF 1 & 2 BEDROOM APARTMENTS,
IN DIDCOT, OXFORDSHIRE WITH A BEAUTIFULLY DESIGNED
NEIGHBOURHOOD PARK



GENERAL DEVELOPMENT LAYOUT

Each home within The Blossoms is considered in design, generous in proportion and gives peace of mind with the distinctive high quality specification and service offered by a Croudace built home.





MOULSFORD COURT
2 BEDROOM APARTMENTS
PLOTS 432, 433, 434, 436, 437, 438, 439,
440, 442, 443, 444, 445, 446 & 448



ROKEMARSH COURT
2 BEDROOM APARTMENTS
PLOTS 449, 452,
455, 456 & 459



WARBOROUGH COURT
2 BEDROOM APARTMENTS
PLOTS 460, 461, 462, 463, 464, 466,
467, 468 & 470



MOULSFORD COURT
1 BEDROOM APARTMENTS
PLOTS 435, 441 & 447



ROKEMARSH COURT
1 BEDROOM APARTMENTS
PLOTS 450, 451, 453, 454, 457 & 458



WARBOROUGH COURT
1 BEDROOM APARTMENTS
PLOTS 465 & 469



MOULSFORD COURT

2 BEDROOM APARTMENTS



MODERN KITCHEN SPACE AND UTILITY

- Omega designed Kitchen
- High quality furniture with soft close doors/drawers and LED pelmet lighting
- Laminate worktops with up-stand to Kitchen
- Chimney extractor hood
- Stainless steel single electric oven
- Induction hob with glass splashback
- Space for fridge/freezer
- Freestanding washing machine to Utility Cupboard

DECORATION AND JOINERY

- Vertical 5 panel moulded internal doors
- Built-in wardrobe to Principal Bedroom

QUALITY BATHROOM AND EN SUITE

- Handmade British Quality Bathroom by Utopia
- Fitted furniture to Bathroom and En Suite
- White sanitaryware and chrome fittings
- Bath with thermostatic bath/shower mixer and screen
- Shower enclosure with thermostatic shower in En Suite
- Ceramic wall tiles
- Heated towel radiators

SECURITY AND PEACE OF MIND

- Brick and block construction
- NHBC Buildmark 10 year cover
- Gas central heating system controlled with Hive Active Heating
- Mains smoke and carbon monoxide alarms
- Composite front door and multipoint locking system
- Double glazed PVCu windows and French casement doors†
- Video entry system

ELECTRICAL AND COMFORT

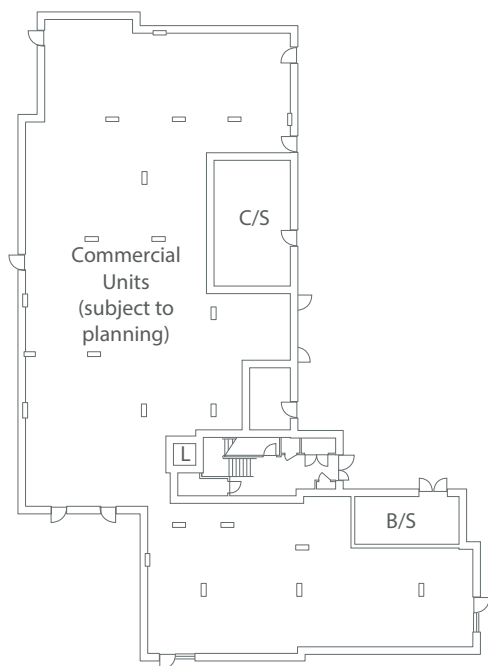
- LED downlights to Hall, Kitchen/Living/Dining Area, Bathroom and En Suite†
- TV point to Kitchen/Living/Dining Area and all bedrooms
- Cat 6 Home Network points to Kitchen/Living/Dining Area and all bedrooms
- Mechanical Ventilation Heat Recovery (MVHR) System

EXTERNAL FEATURES

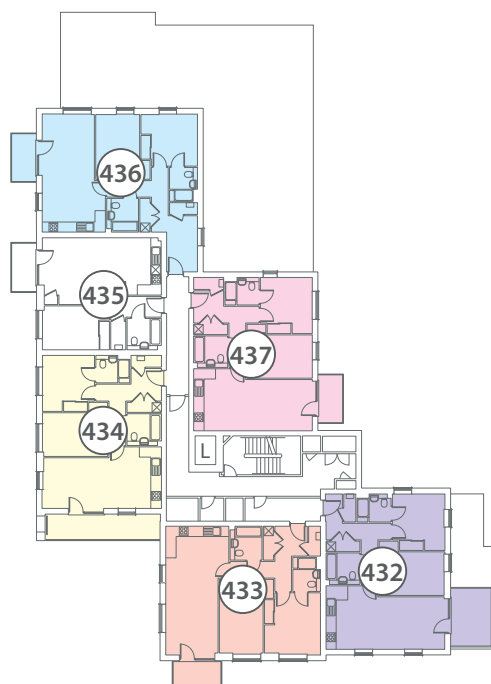
- Balcony
- EV charger (subject to layout)
- Allocated parking

STYLE A
 STYLE B
 STYLE C
 STYLE D
 STYLE E

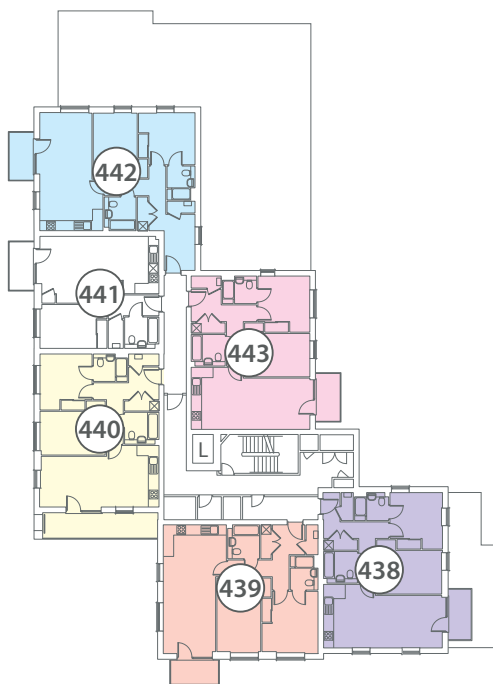
GROUND FLOOR



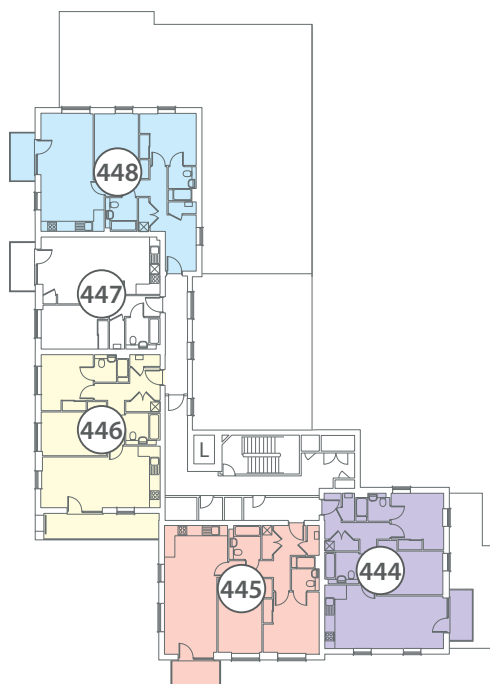
FIRST FLOOR



SECOND FLOOR



THIRD FLOOR



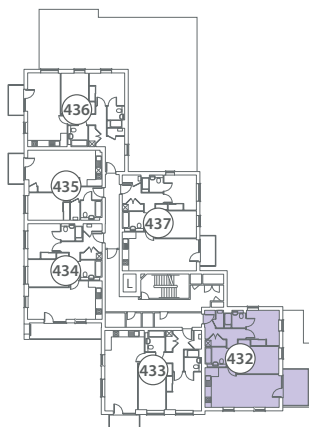


STYLE A

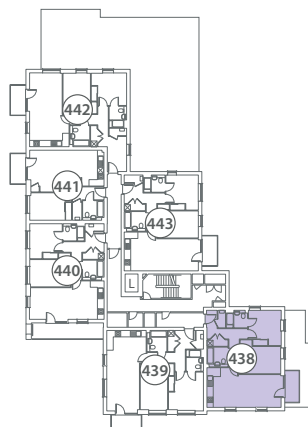
Kitchen/Living/Dining Area
7.58m x 4.00m 24' 10" x 13' 1"

Principal Bedroom
3.41m x 3.40m 11' 2" x 11' 2"

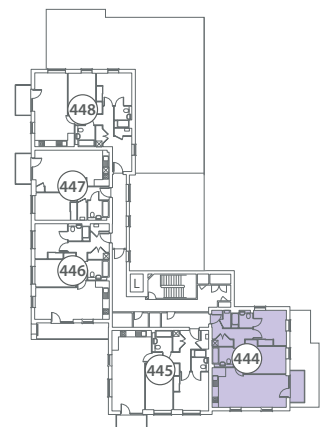
Bedroom 2
4.25m x 2.91m 13' 11" x 9' 7"



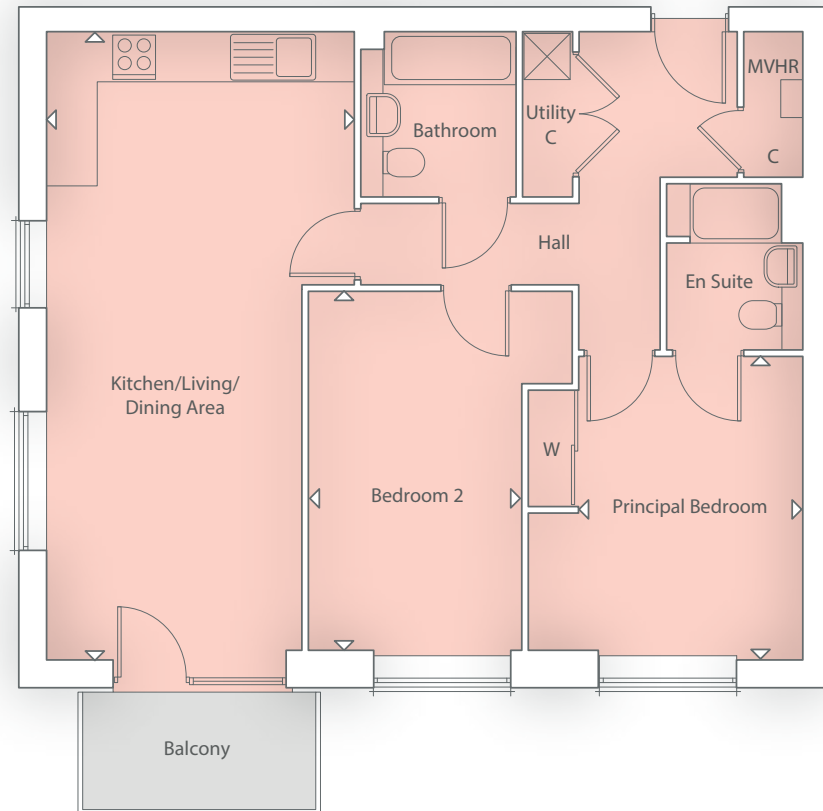
FIRST FLOOR



SECOND FLOOR



THIRD FLOOR

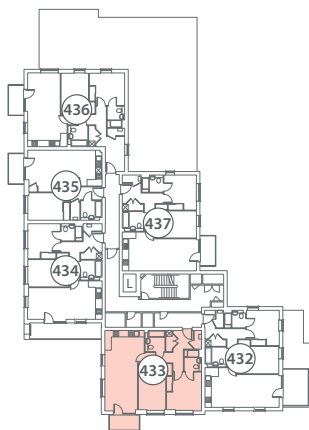


STYLE B

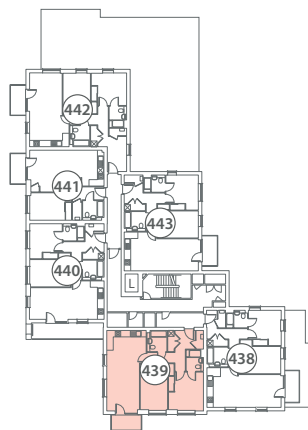
Kitchen/Living/Dining Area
8.15m x 3.99m 26' 9" x 13' 1"

Principal Bedroom
3.90m x 3.40m 12' 9" x 11' 2"

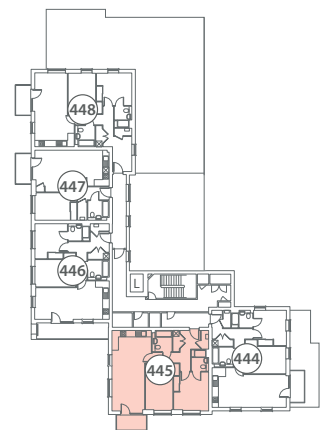
Bedroom 2
4.65m x 2.71m 15' 2" x 8' 11"



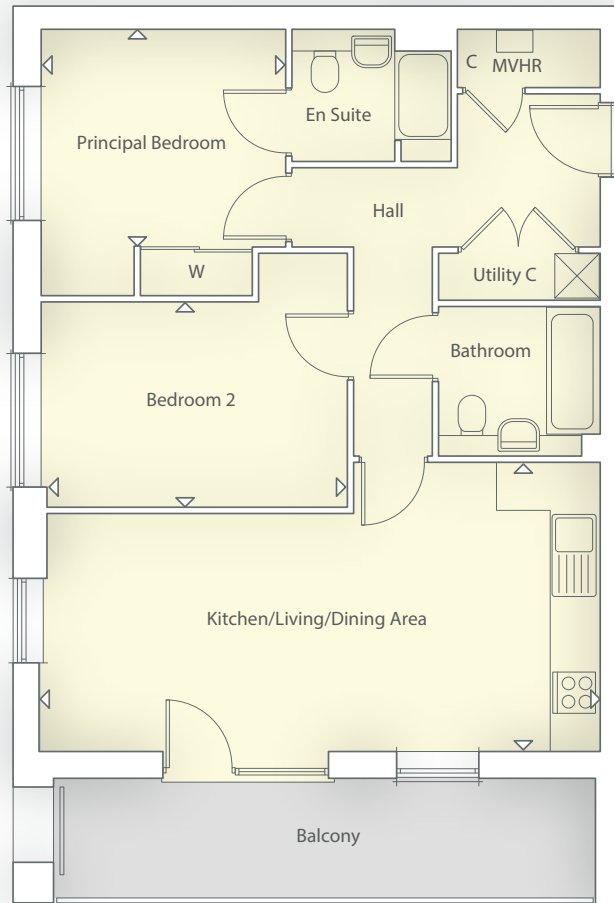
FIRST FLOOR



SECOND FLOOR



THIRD FLOOR

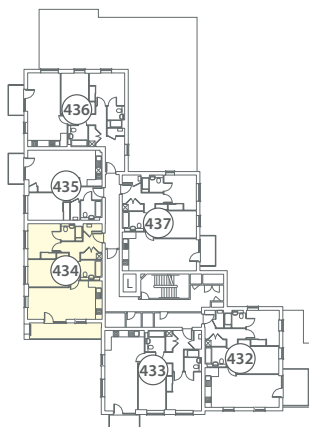


STYLE C

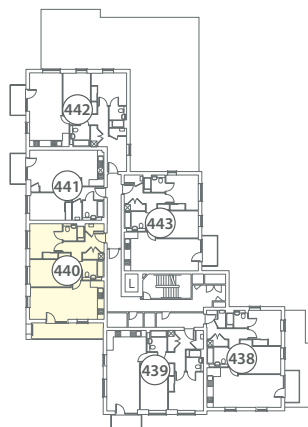
Kitchen/Living/Dining Area
7.58m x 3.88m 24' 10" x 12' 8"

Principal Bedroom
3.53m x 3.41m 11' 7" x 11' 2"

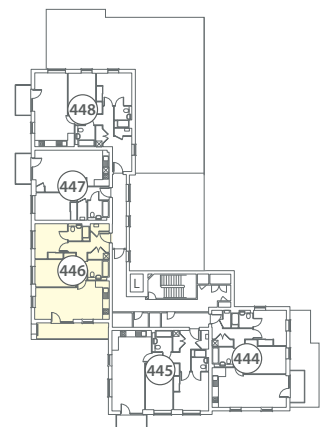
Bedroom 2
4.25m x 2.73m 13' 11" x 8' 11"



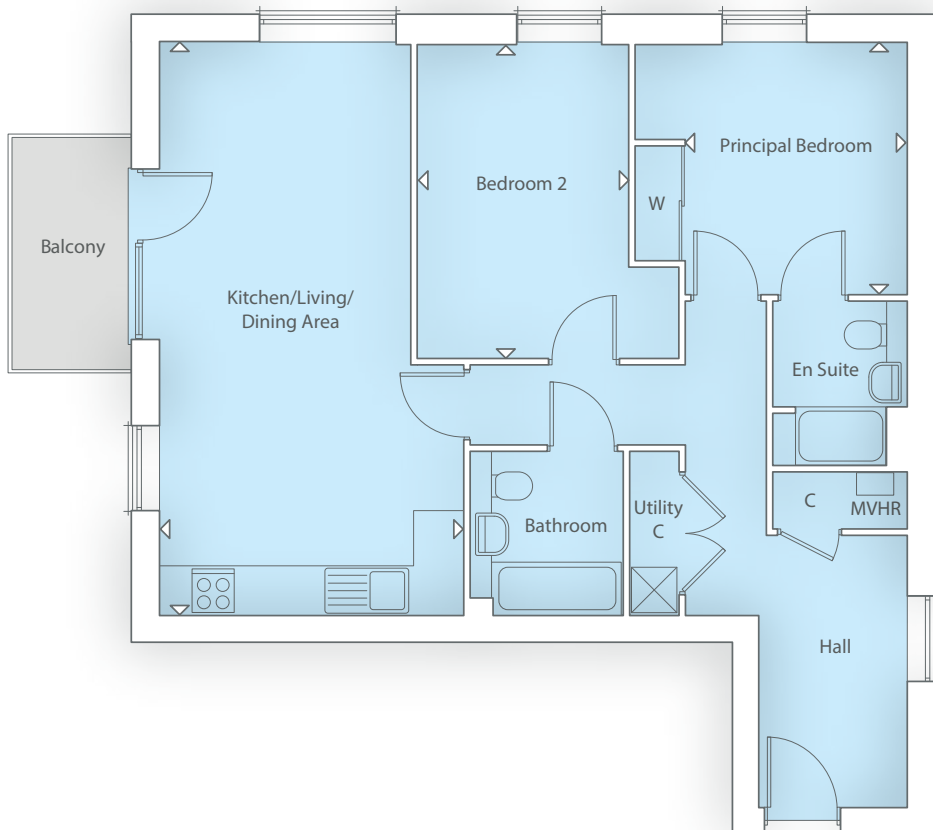
FIRST FLOOR



SECOND FLOOR

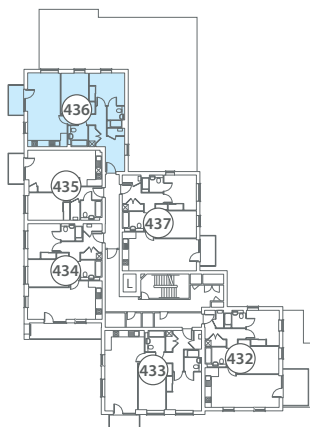


THIRD FLOOR

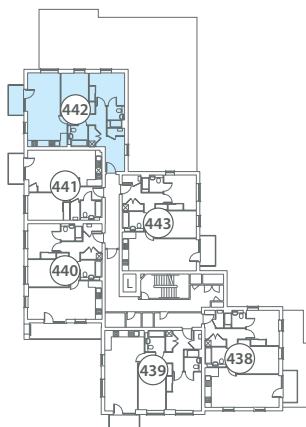


STYLE D

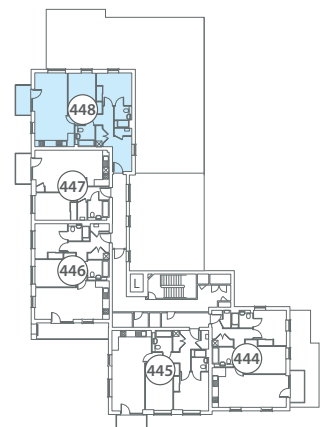
| | |
|----------------------------|------------------|
| Kitchen/Living/Dining Area | |
| 7.52m x 4.09m | 24' 8" x 13' 5" |
| Principal Bedroom | |
| 3.67m x 3.30m | 12' 0" x 10' 10" |
| Bedroom 2 | |
| 4.09m x 2.76m | 13' 5" x 9' 1" |



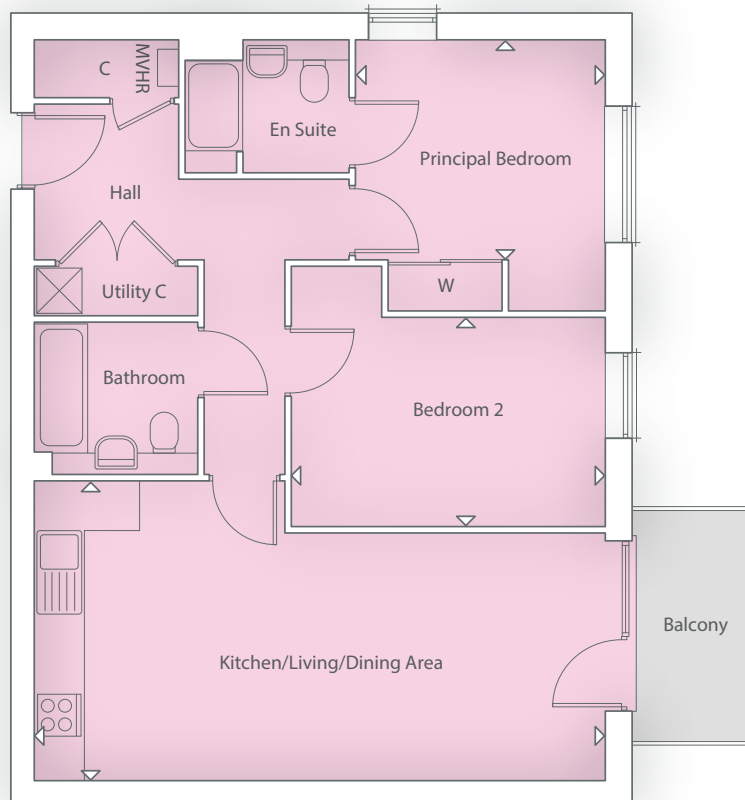
FIRST FLOOR



SECOND FLOOR



THIRD FLOOR

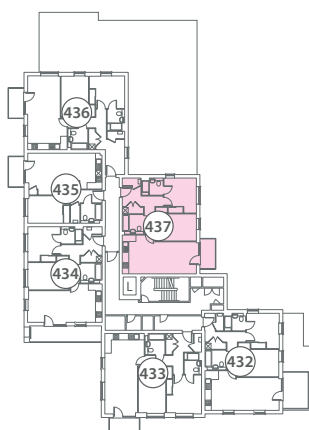


STYLE E

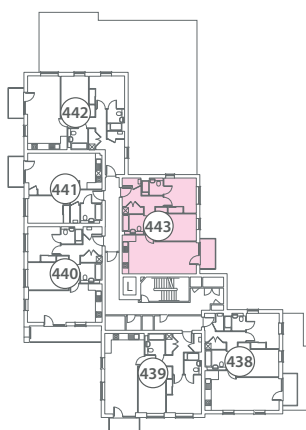
Kitchen/Living/Dining Area
7.56m x 3.95m 24' 10" x 13' 0"

Principal Bedroom
3.61m x 3.38m 11' 10" x 11' 1"

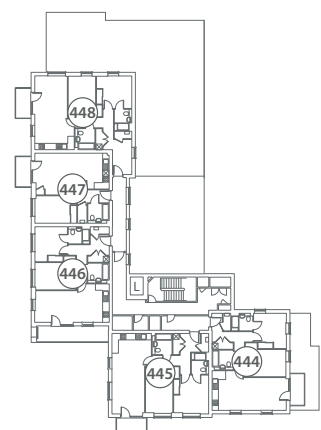
Bedroom 2
4.12m x 2.79m 13' 6" x 9' 2"



FIRST FLOOR



SECOND FLOOR



THIRD FLOOR



MOULSFORD COURT

1 BEDROOM APARTMENTS



MODERN KITCHEN SPACE

- Omega designed Kitchen
- High quality furniture with soft close doors/drawers and LED pelmet lighting
- Laminate worktops with up-stand to Kitchen
- Chimney extractor hood
- Stainless steel single electric oven
- Induction hob with glass splashback
- Space for fridge/freezer
- Integrated washing machine

DECORATION AND JOINERY

- Vertical 5 panel moulded internal doors
- Built-in wardrobe to Principal Bedroom

QUALITY BATHROOM

- Handmade British Quality Bathroom by Utopia
- Fitted furniture to Bathroom
- White sanitaryware and chrome fittings
- Bath with thermostatic bath/shower mixer and screen
- Ceramic wall tiles
- Heated towel radiators

SECURITY AND PEACE OF MIND

- Brick and block construction
- NHBC Buildmark 10 year cover
- Gas central heating system controlled with Hive Active Heating
- Mains smoke and carbon monoxide alarms
- Composite front door and multipoint locking system
- Double glazed PVCu windows and French casement doors†
- Video entry system

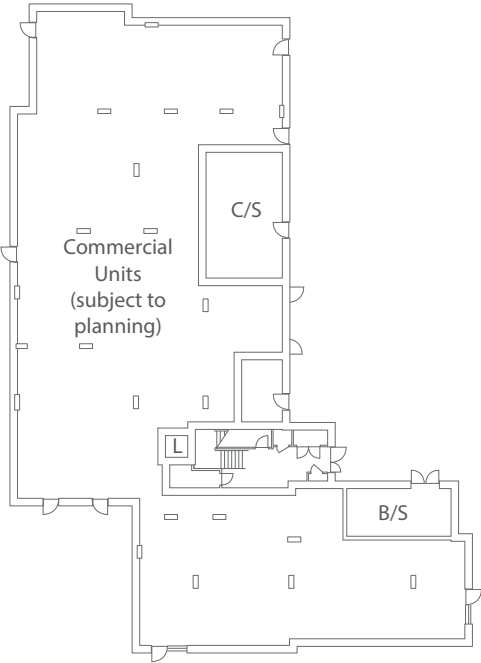
ELECTRICAL AND COMFORT

- LED downlights to Hall, Kitchen/Living/Dining Area and Bathroom†
- TV point to Kitchen/Living/Dining Area and Principal Bedroom
- Cat 6 Home Network points to Kitchen/Living/Dining Area and Principal Bedroom
- Mechanical Ventilation Heat Recovery (MVHR) System

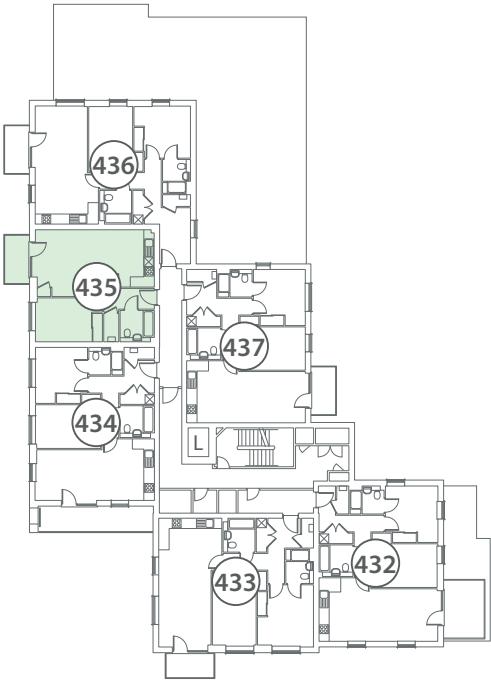
EXTERNAL FEATURES

- Balcony
- EV charger (subject to layout)
- Allocated parking

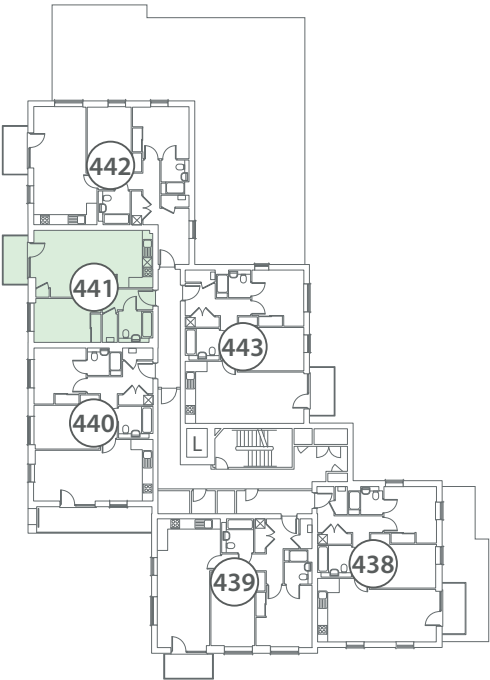
GROUND FLOOR



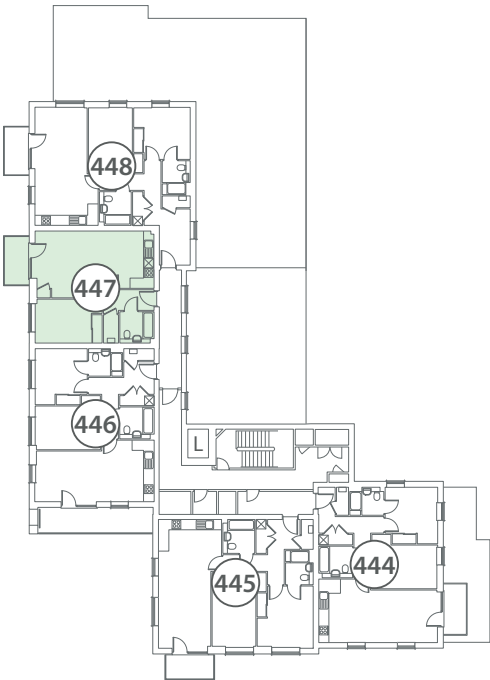
FIRST FLOOR

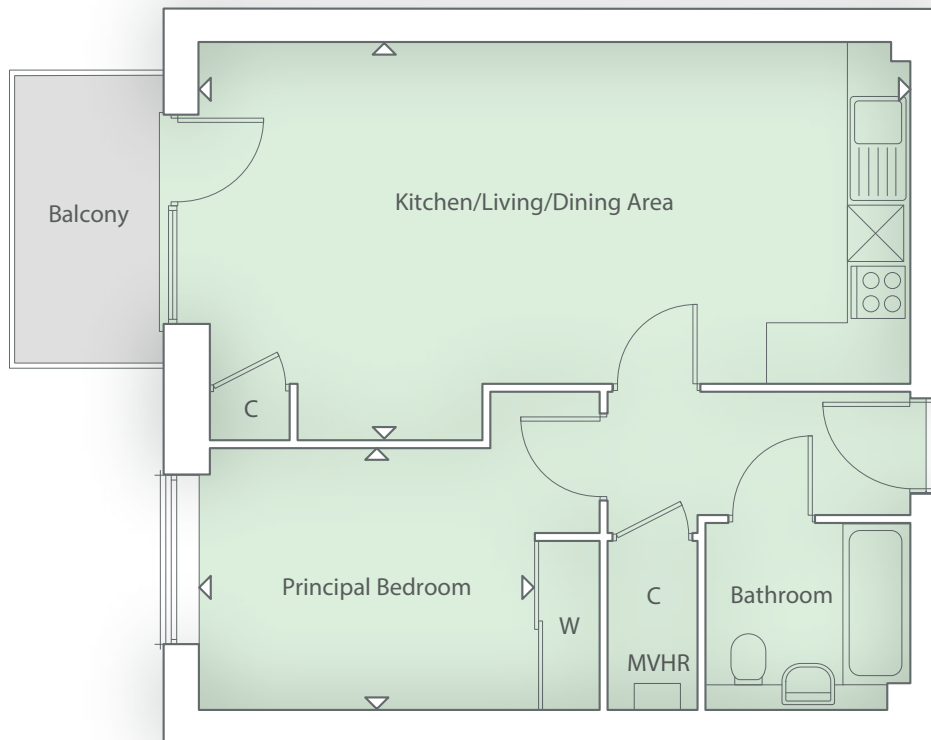


SECOND FLOOR



THIRD FLOOR

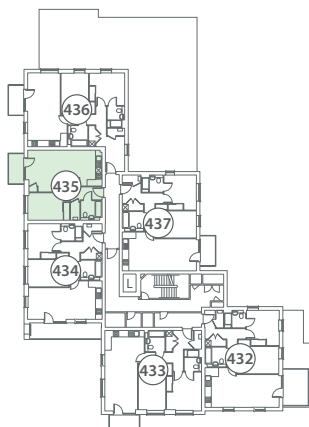




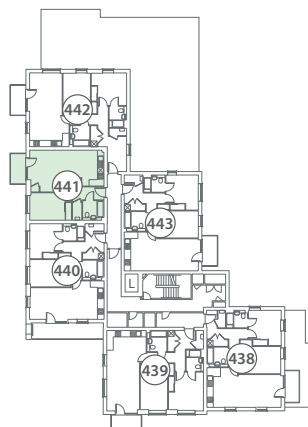
STYLE F

Kitchen/Living/Dining Area
7.58m x 4.27m 24' 10" x 14' 1"

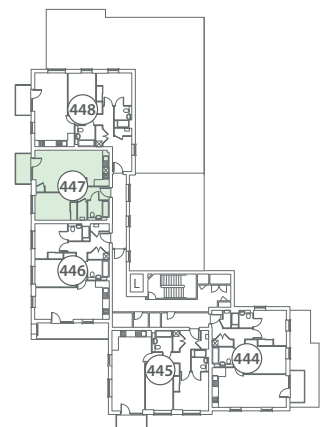
Principal Bedroom
4.34m x 2.81m 14' 3" x 9' 3"



FIRST FLOOR



SECOND FLOOR



THIRD FLOOR



ROKEMARSH COURT

2 BEDROOM APARTMENTS



MODERN KITCHEN SPACE AND UTILITY

- Omega designed Kitchen
- High quality furniture with soft close doors/drawers and LED pelmet lighting
- Laminate worktops with up-stand to Kitchen
- Chimney extractor hood
- Stainless steel single electric oven
- Induction hob with glass splashback
- Space for fridge/freezer
- Freestanding washing machine to Utility Cupboard

DECORATION AND JOINERY

- Vertical 5 panel moulded internal doors
- Built-in wardrobe to Principal Bedroom

QUALITY BATHROOM AND EN SUITE

- Handmade British Quality Bathroom by Utopia
- Fitted furniture to Bathroom and En Suite
- White sanitaryware and chrome fittings
- Bath with thermostatic bath/shower mixer and screen
- Shower enclosure with thermostatic shower in En Suite
- Ceramic wall tiles
- Heated towel radiators

SECURITY AND PEACE OF MIND

- Brick and block construction
- NHBC Buildmark 10 year cover
- Gas central heating system controlled with Hive Active Heating
- Mains smoke and carbon monoxide alarms
- Composite front door and multipoint locking system
- Double glazed PVCu windows and French casement doors†
- Video entry system

ELECTRICAL AND COMFORT

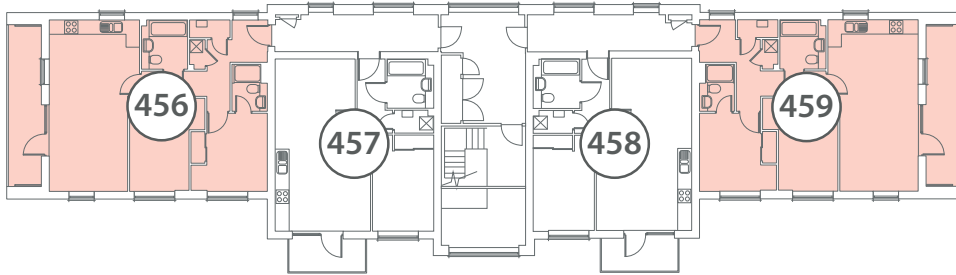
- LED downlights to Hall, Kitchen/Living/Dining Area, Bathroom and En Suite†
- TV point to Kitchen/Living/Dining Area and all bedrooms
- Cat 6 Home Network points to Kitchen/Living/Dining Area and all bedrooms
- Mechanical Ventilation Heat Recovery (MVHR) System

EXTERNAL FEATURES

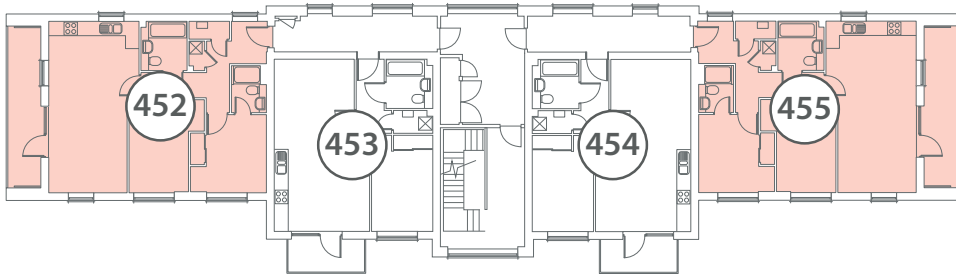
- Balcony to Plots 452, 455, 456 & 459
- Access to outdoor patio to Plot 449
- EV charger (subject to layout)
- Allocated parking

■ STYLE A ■ STYLE B

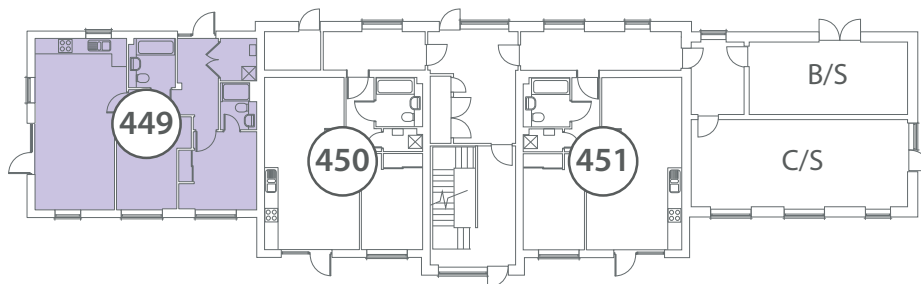
SECOND FLOOR

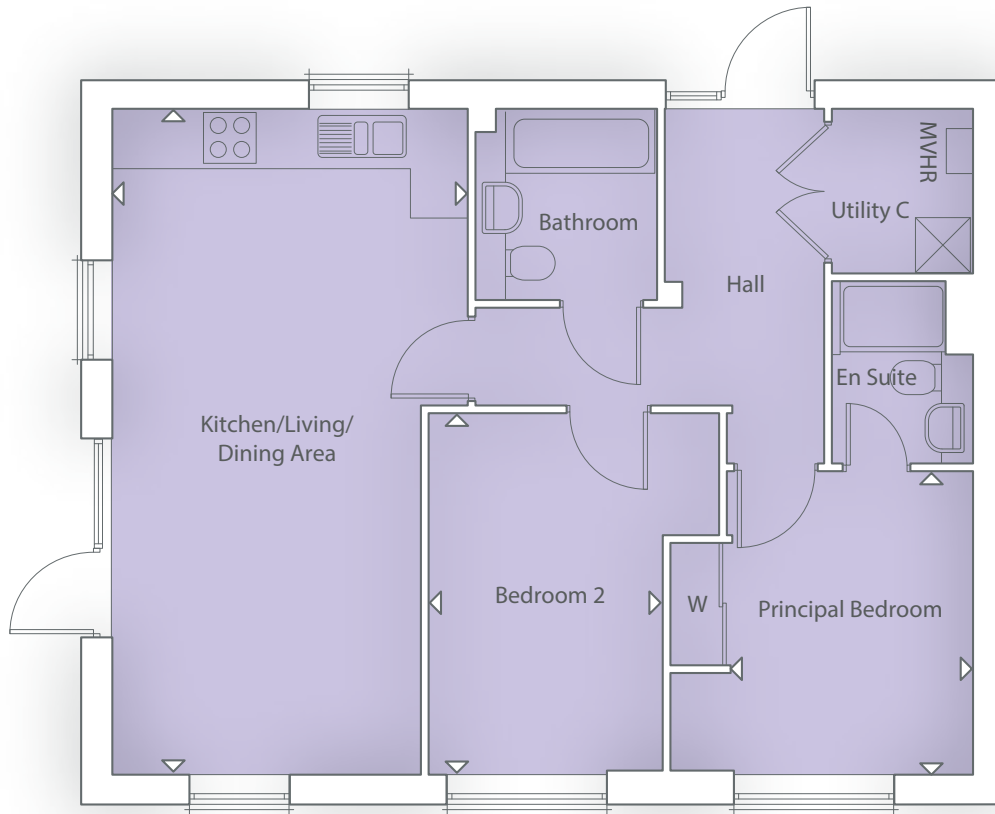


FIRST FLOOR



GROUND FLOOR



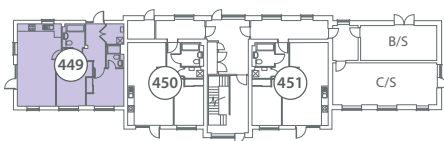


STYLE A

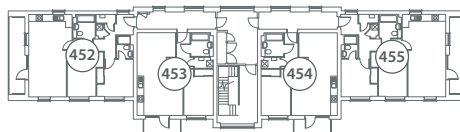
Kitchen/Living/Dining Area
7.55m x 4.01m 24' 9" x 13' 2"

Principal Bedroom
3.42m x 2.77m 11' 3" x 9' 1"

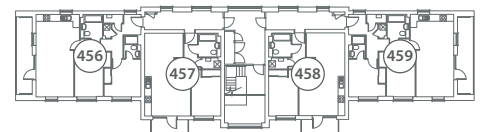
Bedroom 2
4.12m x 3.34m 13' 6" x 10' 11"



GROUND FLOOR

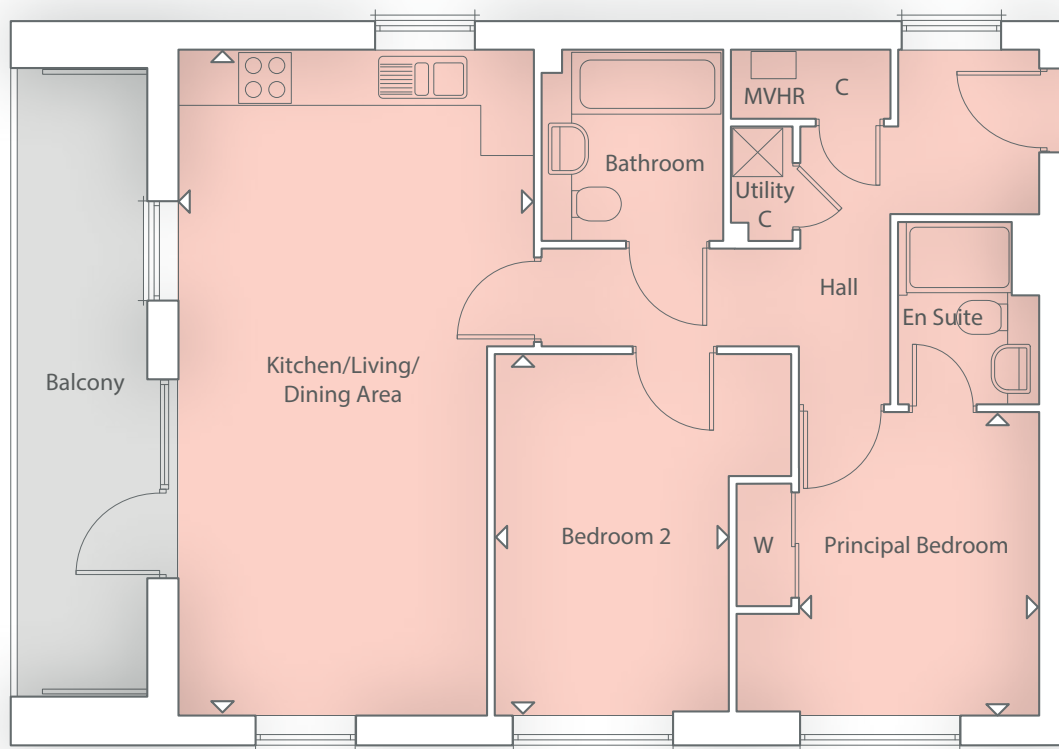


FIRST FLOOR



SECOND FLOOR

Please note floor plans are not to scale. Doors, Bays and Window configuration may vary.
For more information regarding garages, car ports and allocated parking, please speak to one of our Sales Consultants. Please note that fittings and features installed may vary from shown.

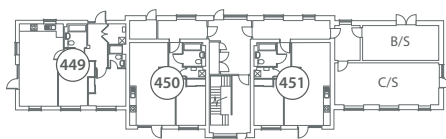


STYLE B

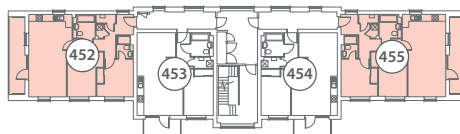
Kitchen/Living/Dining Area
7.14m x 3.50m 23' 5" x 11' 6"

Principal Bedroom
3.45m x 2.77m 11' 4" x 9' 1"

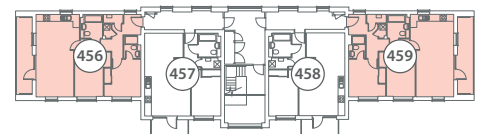
Bedroom 2
4.12m x 2.68m 13' 6" x 8' 9"



GROUND FLOOR



FIRST FLOOR



SECOND FLOOR

ROKEMARSH COURT

1 BEDROOM APARTMENTS



MODERN KITCHEN SPACE AND UTILITY

- Omega designed Kitchen
- High quality furniture with soft close doors/drawers and LED pelmet lighting
- Laminate worktops with up-stand to Kitchen
- Chimney extractor hood
- Stainless steel single electric oven
- Induction hob with glass splashback
- Space for fridge/freezer
- Freestanding washing machine to Utility Cupboard

DECORATION AND JOINERY

- Vertical 5 panel moulded internal doors
- Built-in wardrobe to Principal Bedroom

QUALITY BATHROOM

- Handmade British Quality Bathroom by Utopia
- Fitted furniture to Bathroom
- White sanitaryware and chrome fittings
- Bath with thermostatic bath/shower mixer and screen
- Ceramic wall tiles
- Heated towel radiators

SECURITY AND PEACE OF MIND

- Brick and block construction
- NHBC Buildmark 10 year cover
- Gas central heating system controlled with Hive Active Heating
- Mains smoke and carbon monoxide alarms
- Composite front door and multipoint locking system
- Double glazed PVCu windows and French casement doors†
- Video entry system

ELECTRICAL AND COMFORT

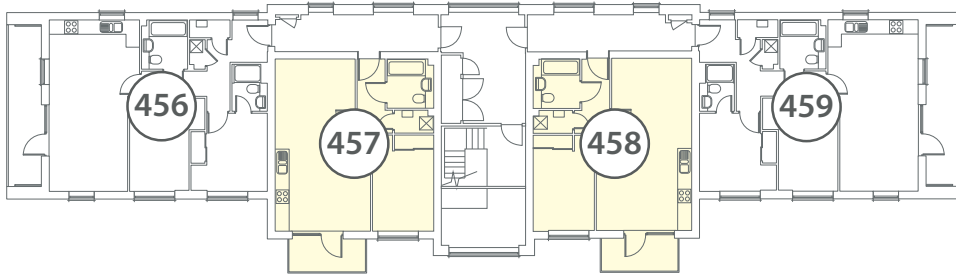
- LED downlights to Hall, Kitchen/Living/Dining Area and Bathroom†
- TV point to Kitchen/Living/Dining Area and Principal Bedroom
- Cat 6 Home Network points to Kitchen/Living/Dining Area and Principal Bedroom
- Mechanical Ventilation Heat Recovery (MVHR) System

EXTERNAL FEATURES

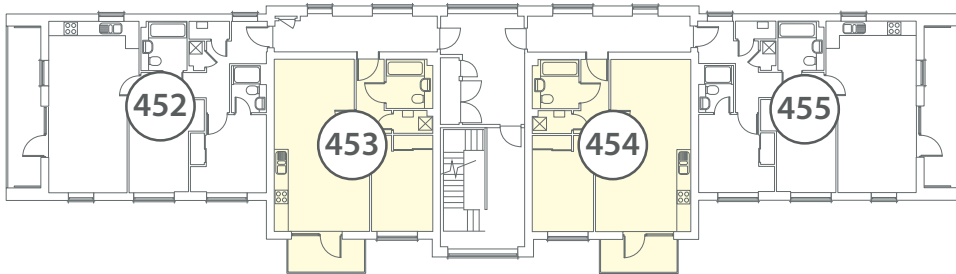
- Balcony to Plots 453, 454, 457 & 458
- Access to outdoor patio to Plots 450 & 451
- EV charger (subject to layout)
- Allocated parking

STYLE C

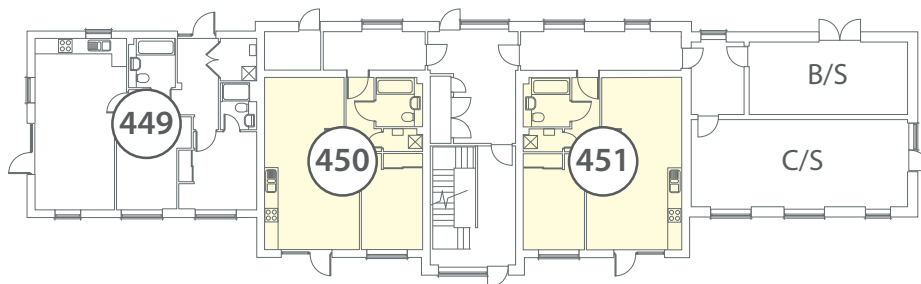
SECOND FLOOR

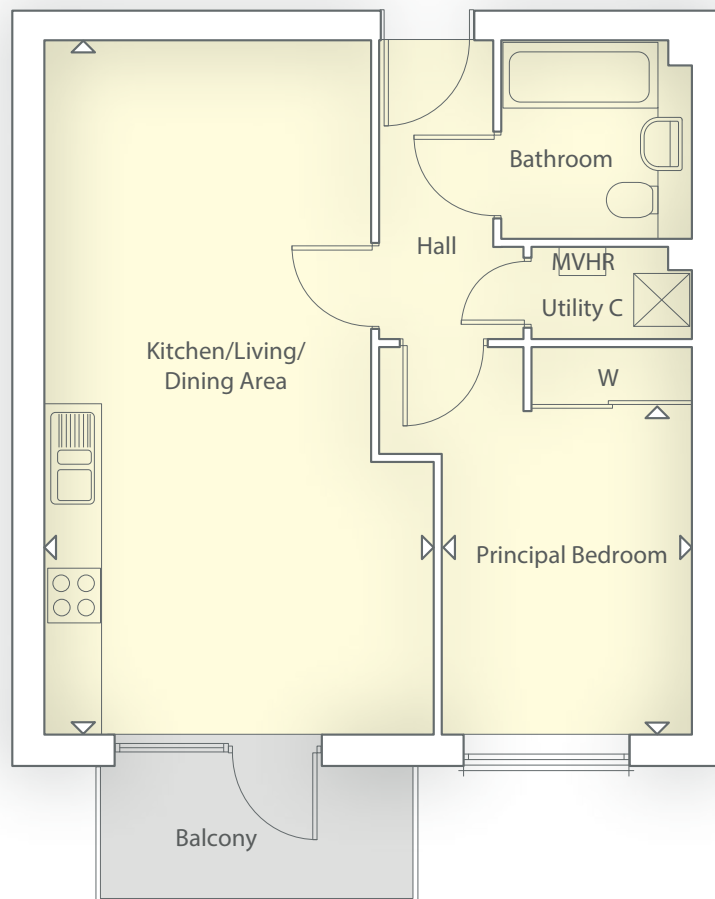


FIRST FLOOR



GROUND FLOOR

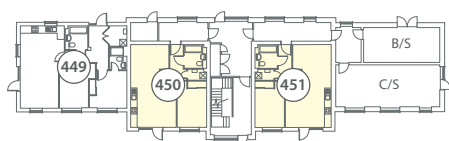




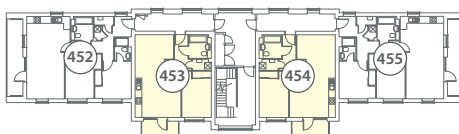
STYLE C

Kitchen/Living/Dining Area
7.54m x 4.27m 24' 9" x 14' 1"

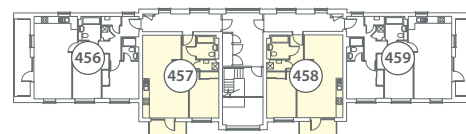
Principal Bedroom
4.22m x 2.74m 13' 10" x 9' 0"



GROUND FLOOR



FIRST FLOOR



SECOND FLOOR

Please note floor plans are not to scale. Doors, Bays and Window configuration may vary.
For more information regarding garages, car ports and allocated parking, please speak to one of our Sales Consultants. Please note that fittings and features installed may vary from shown.



WARBOROUGH COURT

2 BEDROOM APARTMENTS



MODERN KITCHEN SPACE AND UTILITY

- Omega designed Kitchen
- High quality furniture with soft close doors/drawers and LED pelmet lighting
- Laminate worktops with up-stand to Kitchen
- Chimney extractor hood
- Stainless steel single electric oven
- Induction hob with glass splashback
- Space for fridge/freezer
- Freestanding washing machine to Utility Cupboard

DECORATION AND JOINERY

- Vertical 5 panel moulded internal doors
- Built-in wardrobe to Principal Bedroom

QUALITY BATHROOM AND EN SUITE

- Handmade British Quality Bathroom by Utopia
- Fitted furniture to Bathroom and En Suite
- White sanitaryware and chrome fittings
- Bath with thermostatic bath/shower mixer and screen
- Shower enclosure with thermostatic shower in En Suite
- Ceramic wall tiles
- Heated towel radiators

SECURITY AND PEACE OF MIND

- Brick and block construction
- NHBC Buildmark 10 year cover
- Gas central heating system controlled with Hive Active Heating
- Mains smoke and carbon monoxide alarms
- Composite front door and multipoint locking system
- Double glazed PVCu windows and French casement doors†
- Video entry system

ELECTRICAL AND COMFORT

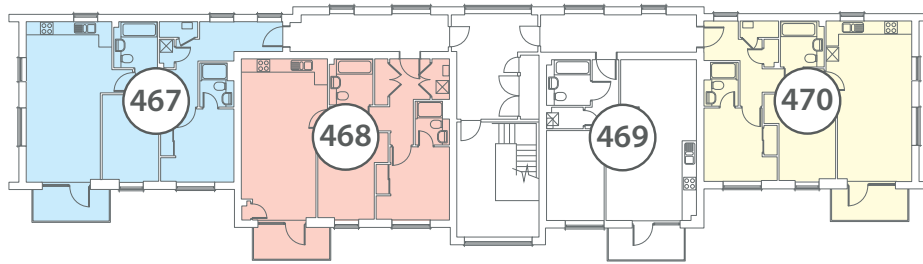
- LED downlights to Hall, Kitchen/Living/Dining Area, Bathroom and En Suite†
- TV point to Kitchen/Living/Dining Area and all bedrooms
- Cat 6 Home Network points to Kitchen/Living/Dining Area and all bedrooms
- Mechanical Ventilation Heat Recovery (MVHR) System

EXTERNAL FEATURES

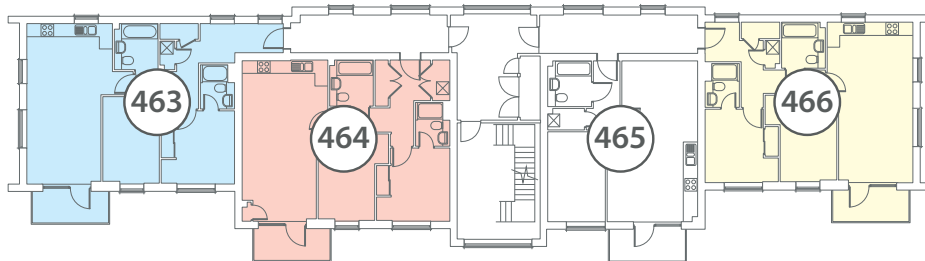
- Balcony to Plots 463, 464, 466, 467, 468 & 470
- Access to outdoor patio to Plots 460, 461 & 462
- EV charger (subject to layout)
- Allocated parking

■ STYLE A ■ STYLE B ■ STYLE C ■ STYLE D

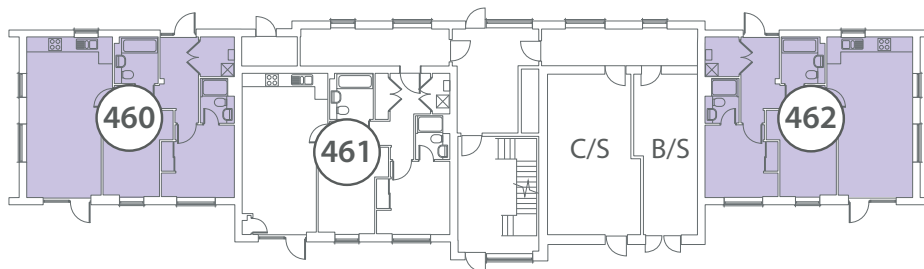
SECOND FLOOR

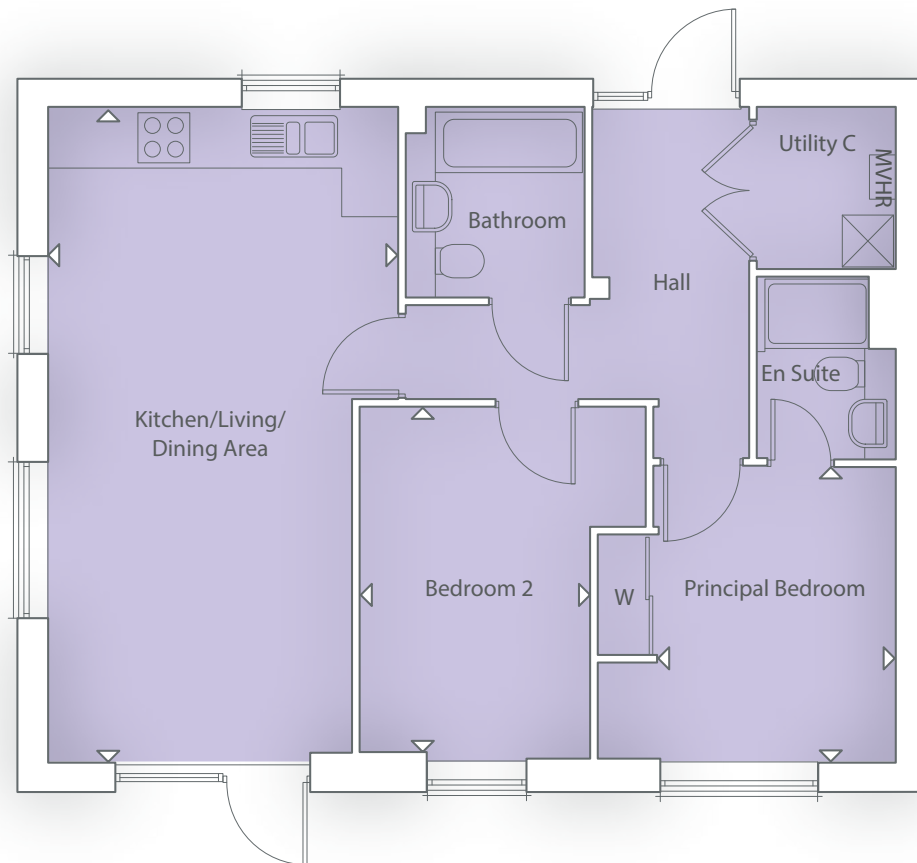


FIRST FLOOR



GROUND FLOOR



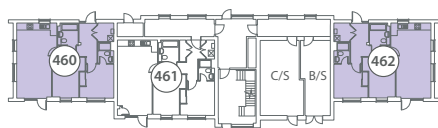


STYLE A

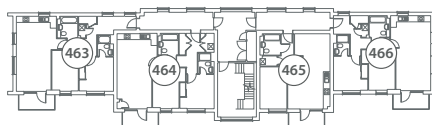
Kitchen/Living/Dining Area
7.59m x 4.00m 24' 9" x 13' 1"

Principal Bedroom
3.45m x 2.80m 11' 3" x 9' 2"

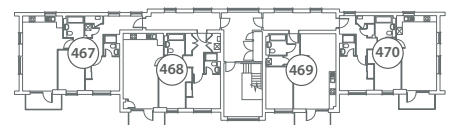
Bedroom 2
4.12m x 2.68m 13' 5" x 8' 8"



GROUND FLOOR

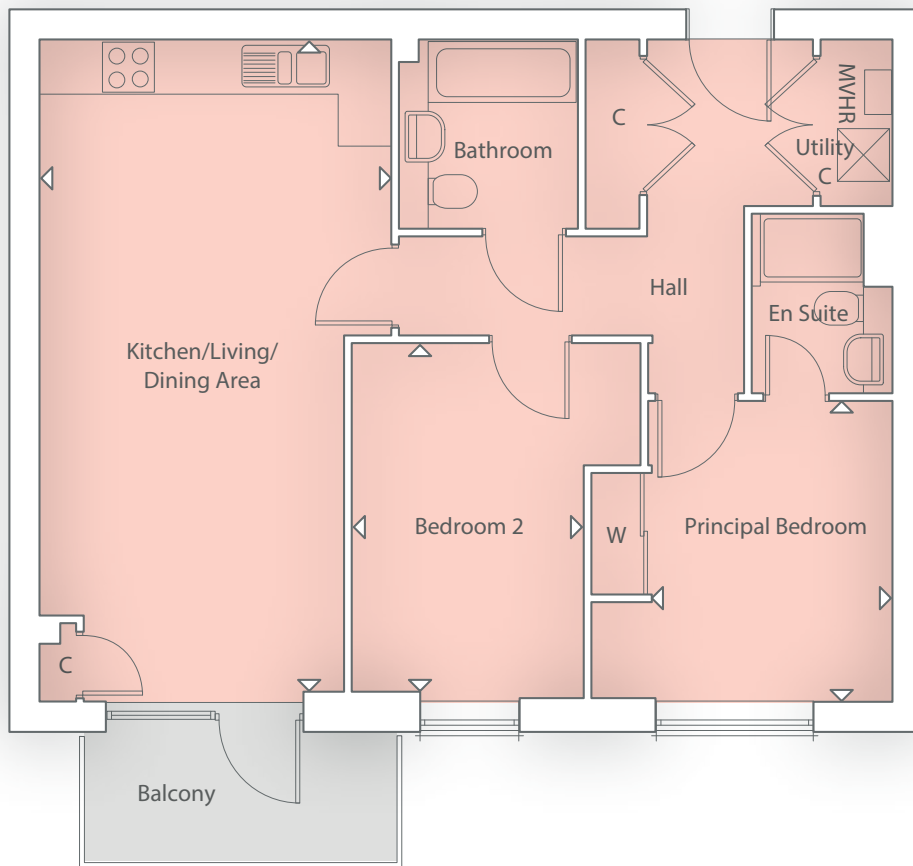


FIRST FLOOR



SECOND FLOOR

Please note floor plans are not to scale. Doors, Bays and Window configuration may vary.
For more information regarding garages, car ports and allocated parking, please speak to one of our Sales Consultants. Please note that fittings and features installed may vary from shown.

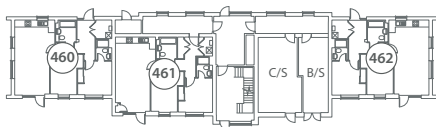


STYLE B

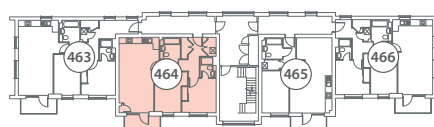
Kitchen/Living/Dining Area
7.59m x 4.00m 24' 9" x 13' 1"

Principal Bedroom
3.45m x 2.80m 11' 3" x 9' 2"

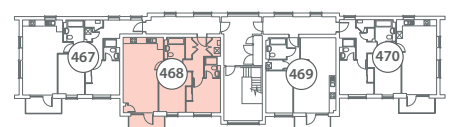
Bedroom 2
4.12m x 2.68m 13' 5" x 8' 8"



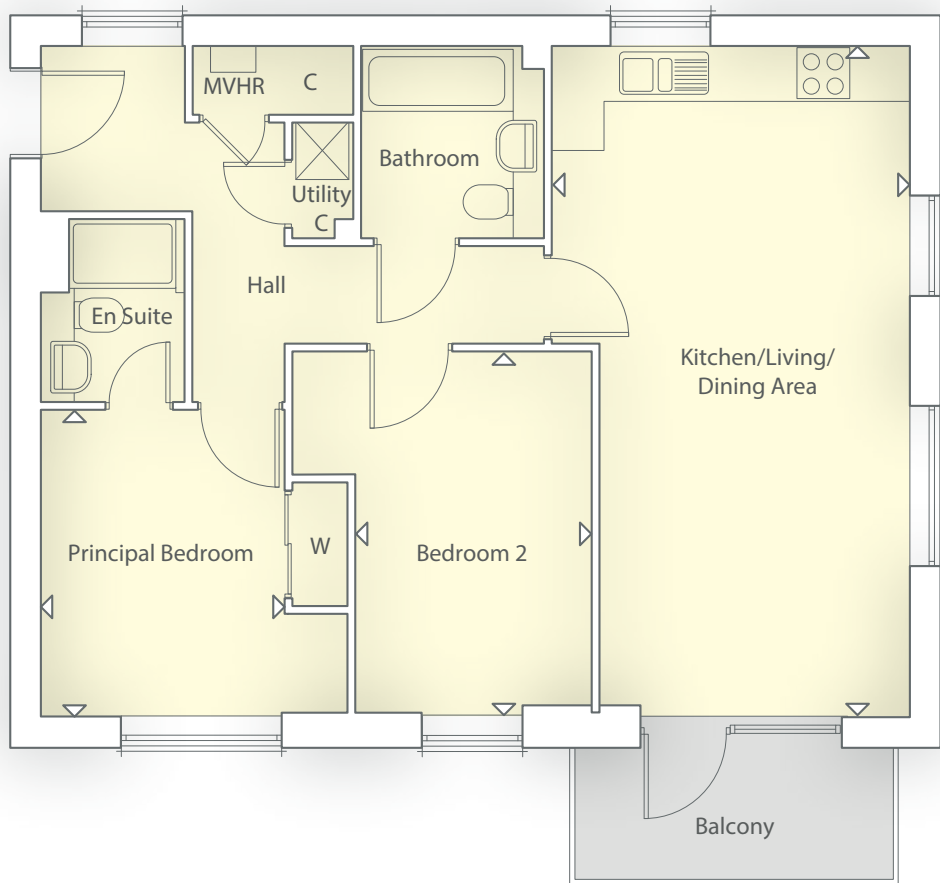
GROUND FLOOR



FIRST FLOOR



SECOND FLOOR

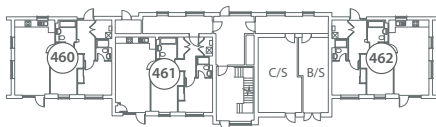


STYLE C

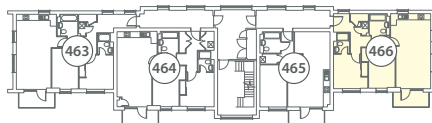
Kitchen/Living/Dining Area
7.59m x 4.02m 24' 9" x 13' 2"

Principal Bedroom
3.45m x 2.80m 11' 3" x 9' 2"

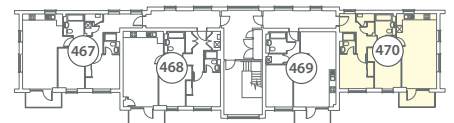
Bedroom 2
4.09m x 2.68m 13' 4" x 8' 8"



GROUND FLOOR

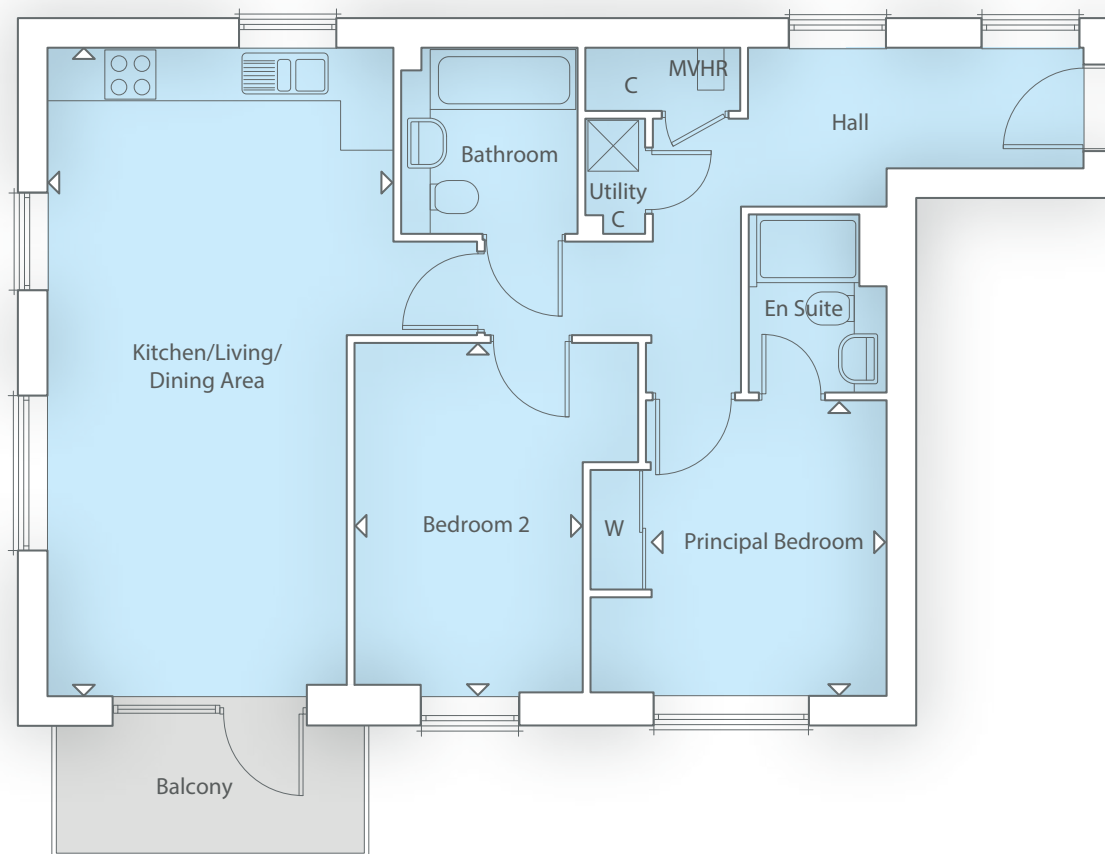


FIRST FLOOR



SECOND FLOOR

Please note floor plans are not to scale. Doors, Bays and Window configuration may vary.
For more information regarding garages, car ports and allocated parking, please speak to one of our Sales Consultants. Please note that fittings and features installed may vary from shown.

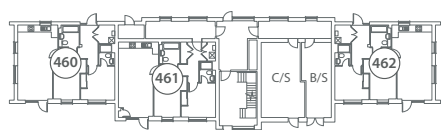


STYLE D

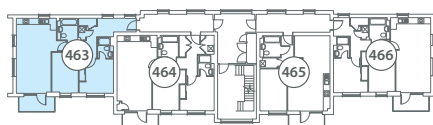
Kitchen/Living/Dining Area
7.59m x 4.03m 24' 9" x 13' 2"

Principal Bedroom
3.45m x 2.80m 11' 3" x 9' 2"

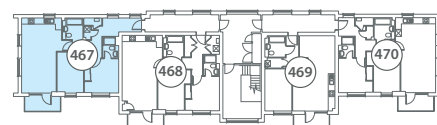
Bedroom 2
4.12m x 2.68m 13' 5" x 8' 8"



GROUND FLOOR



FIRST FLOOR



SECOND FLOOR

WARBOROUGH COURT

1 BEDROOM APARTMENTS



MODERN KITCHEN SPACE AND UTILITY

- Omega designed Kitchen
- High quality furniture with soft close doors/drawers and LED pelmet lighting
- Laminate worktops with up-stand to Kitchen
- Chimney extractor hood
- Stainless steel single electric oven
- Induction hob with glass splashback
- Space for fridge/freezer
- Freestanding washing machine to Utility Cupboard

DECORATION AND JOINERY

- Vertical 5 panel moulded internal doors
- Double doors to Kitchen/Living/Dining Area from Study (Style F)
- Built-in wardrobe to Principal Bedroom (Style F)

QUALITY BATHROOM AND EN SUITE

- Handmade British Quality Bathroom by Utopia
- Fitted furniture to Bathroom (Style E)
- Fitted furniture to Bathroom and En Suite (Style F)
- White sanitaryware and chrome fittings
- Bath with thermostatic bath/shower mixer and screen
- Shower enclosure with thermostatic shower in En Suite (Style F)
- Ceramic wall tiles
- Heated towel radiators

SECURITY AND PEACE OF MIND

- Brick and block construction
- NHBC Buildmark 10 year cover
- Gas central heating system controlled with Hive Active Heating
- Mains smoke and carbon monoxide alarms
- Composite front door and multipoint locking system
- Double glazed PVCu windows and French casement doors†
- Video entry system

ELECTRICAL AND COMFORT

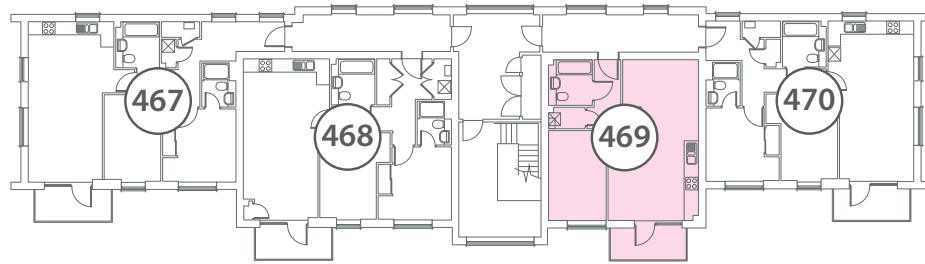
- LED downlights to Hall, Kitchen/Living/Dining Area and Bathroom (Style E)†
- LED downlights to Hall, Kitchen/Living/Dining Area, Bathroom and En Suite (Style F)†
- TV point to Kitchen/Living/Dining Area and Principal Bedroom
- Cat 6 Home Network points to Kitchen/Living/Dining Area and Principal Bedroom (Style E)
- Cat 6 Home Network points to Kitchen/Living/Dining Area, Principal Bedroom and Study (Style F)
- Mechanical Ventilation Heat Recovery (MVHR) System

EXTERNAL FEATURES

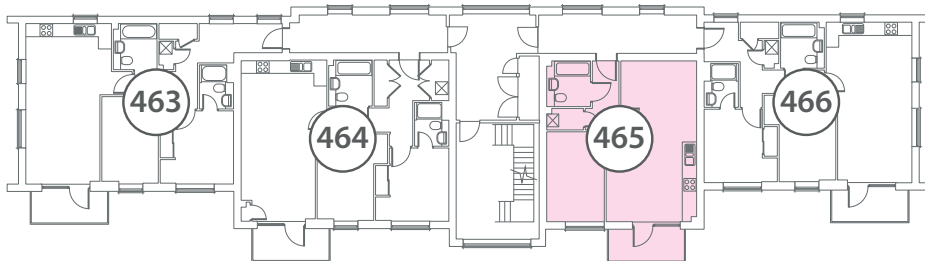
- Balcony (Style E)
- Access to outdoor patio (Style F)
- EV charger (subject to layout)
- Allocated parking

■ STYLE E ■ STYLE F

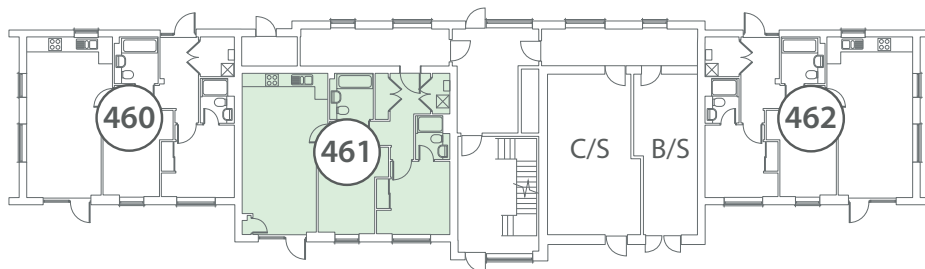
SECOND FLOOR

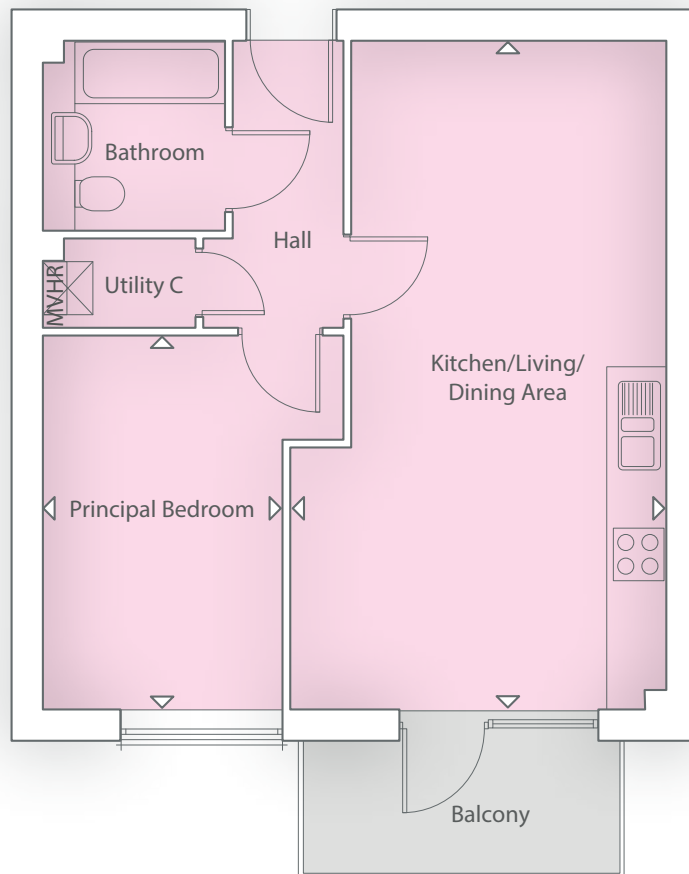


FIRST FLOOR



GROUND FLOOR

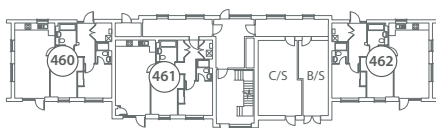




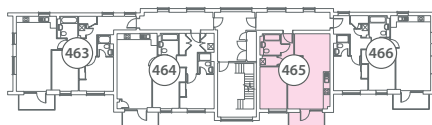
STYLE E

Kitchen/Living/Dining Area
7.59m x 3.60m 24' 9" x 11' 8"

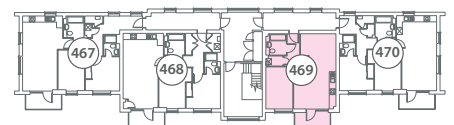
Principal Bedroom
3.58m x 2.74m 11' 7" x 9' 0"



GROUND FLOOR

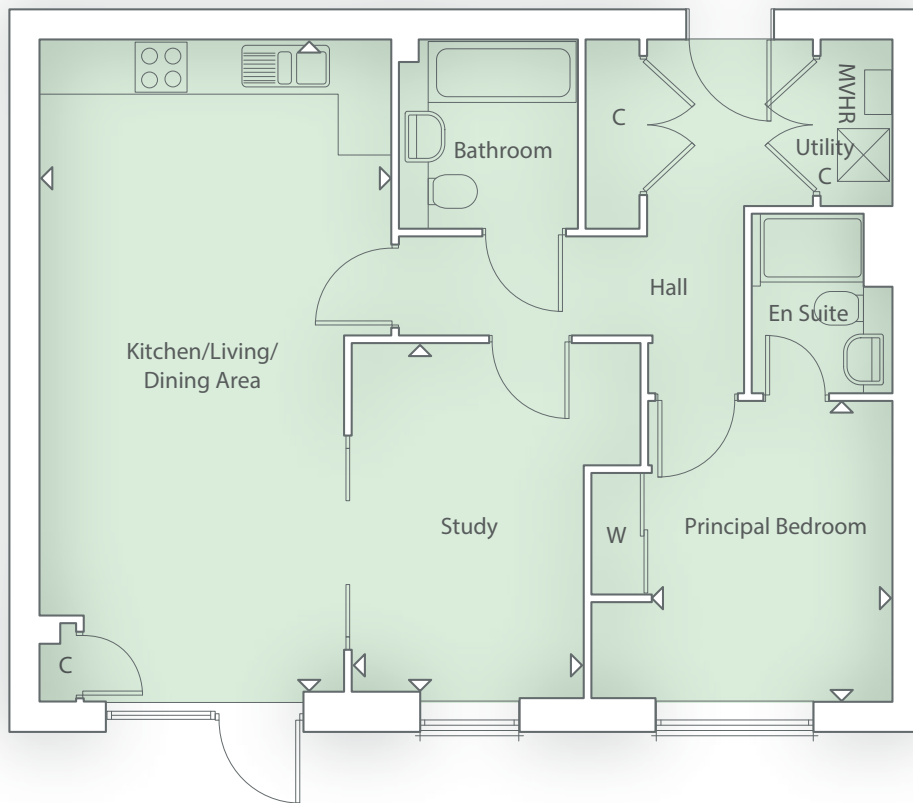


FIRST FLOOR



SECOND FLOOR

Please note floor plans are not to scale. Doors, Bays and Window configuration may vary.
For more information regarding garages, car ports and allocated parking, please speak to one of our Sales Consultants. Please note that fittings and features installed may vary from shown.

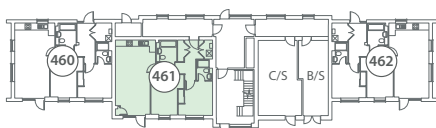


STYLE F

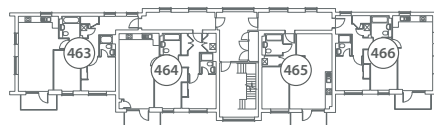
Kitchen/Living/Dining Area
7.59m x 4.00m 24' 9" x 13' 1"

Principal Bedroom
3.45m x 2.80m 11' 3" x 9' 2"

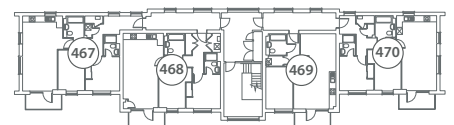
Study
4.12m x 2.68m 13' 5" x 8' 8"



GROUND FLOOR



FIRST FLOOR



SECOND FLOOR





A COMMITMENT TO QUALITY

Croudace Homes takes great pride in providing our customers with expert advice and guidance, to ensure that every stage of the home buying process is as clear and straight forward as possible.

We regularly seek feedback from customers who have bought and moved into their Croudace home and use what we learn alongside research we conduct into changes in lifestyles to ensure our designs are continually enhanced and improved.

Ecological and environmental aspects of construction are of the utmost importance and are at the forefront of all our designs, as well as the entire build process. Croudace homes are designed to maximise energy efficiency and minimise their impact on the local environment.

Croudace Homes is uncompromising in its commitment to providing customers with the highest quality homes and peerless after-sales care. We are proud to receive excellent ratings from independent customer satisfaction surveys, which place us amongst the finest home builders in the country.

We understand that buying a home is one of the biggest decisions one can make, which is why we aim to simplify the process as much as possible. We hope you decide to buy a Croudace home and wish you many happy years living in it.



Adrian Watts,
Group Chief Executive





In line with ongoing sustainability efforts Croudace Homes will no longer provide printed brochures at our developments. Think green – please only print this brochure if essential.

*Ideal
Standard*

AQUALISA

AEG
Electrolux

NEW
HOMES
QUALITY
CODE

NEW HOMES
OMBUDSMAN
SERVICE



The contents of this brochure have been produced in good faith. Architectural details and elevational treatments, including window or porch styles and positions, may vary from those shown; bay windows are plot specific.

All dimensions are approximate. All imagery, including trees and landscaping, are illustrative. Please check with one of our Sales Consultants for detailed information regarding your chosen home style and/or plot. We continually review the specification of our product and reserve the right to amend it. Although it is our intention that information given is truthful, aspects are subject to change as The Blossoms progresses. This brochure does not form part of any contract or constitute an offer.

Date of Preparation April 2025.

Willowbrook Park
Kilburn Place,
Didcot
Oxfordshire
OX11 9SH

Open daily 10am to 5pm

0333 321 8649

willowbrookpark@croudacehomes.co.uk

croudacehomes